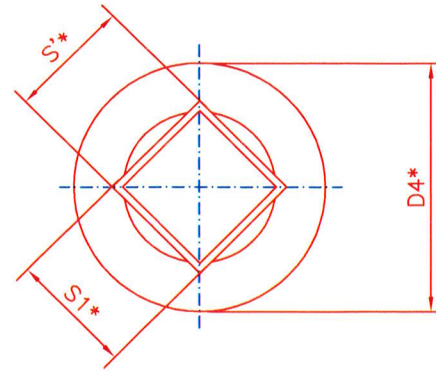
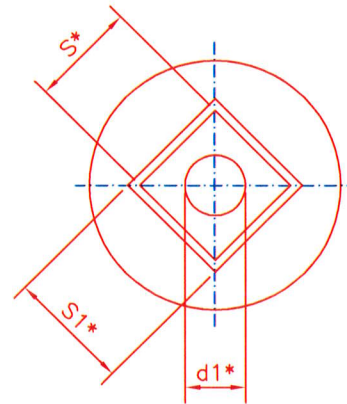


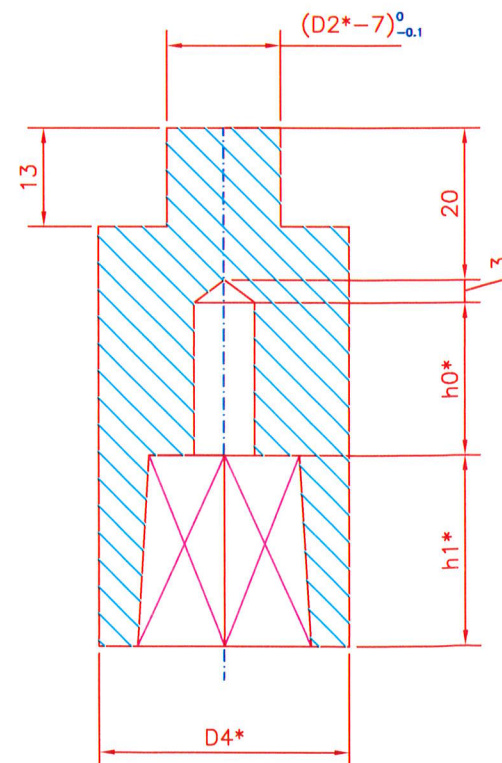
Vedere din A



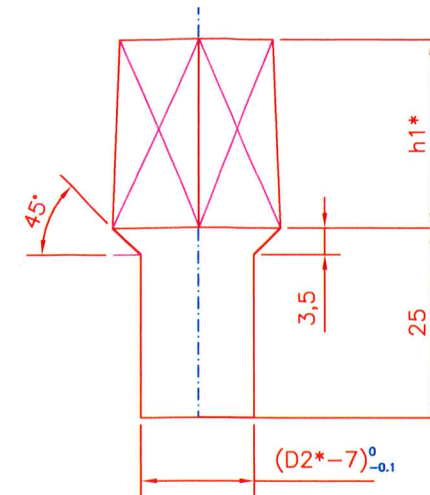
Vedere din B



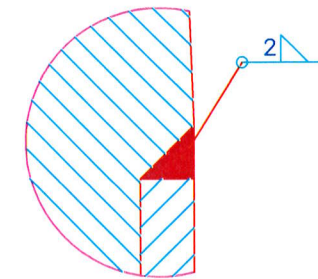
Poz. 3



Poz. 1





Detaliu C



NOTA:

Toate cotele notate cu * se vor determina dupa achizitia robinetului cu sertar pana pentru fiecare diametru.



3	Piesa legatura tija robinet			1	OL 37.2	-	
2	Teava		STAS 404/1-87	1	OLT 35	-	
1	Piesa de legatura roata manevra		-	1	OL 37.2	-	
Poz.	DENUMIRE		Nr. desen sau STAS	BUC	MATERIAL	OBSERVATII	MASA kg/buc
0	11.2020	Tema de proiectare S-CA 185/03.07.2019	Documentatie avizata		Victor DINITA	Liviu ANDREI	Antonio TACHE
REVIZIA	DATA	DESCRIEREA REVIZIEI			REVIZUIT	VERIFICAT	APROBAT
MATERIAL		MASA NETA		SCARA		DATA	
-		-		-		11.2020	
Proiectat	Victor DINITA	"STUDIU DE SOLUTIE SI PROIECTARE PRIVIND PROTEJAREA CONDUCTELOR DE TRANSPORT TITEI ø12" SI ø14 CARTOJANI, TRASEU SITUAT INTRE LINIILE CF TRIAJ BRAZI SI STRADA GHIGHIULUI, ORAS PLOIESTI, PE LUNGIME TOTALA DE 110M"					Faze proiect P.T.
Desenat	Victor DINITA						
Verificat	Liviu ANDREI						
Aprobat	Antonio TACHE						
							
		PRELUNGITOR TIJA					
CON-001/2019-B1.18					REVIZIA 0	PLANSA -	FORMAT A3